

Kathleen Hehir's

mandolintab.net

Musical staff with treble clef, key signature of one sharp (F#), and 12/8 time signature. The melody consists of eighth and quarter notes, starting with a quarter rest followed by a dotted quarter note with a fermata.

Mandolin

5 4 5 0 5 4 2 2 4 5 2 2 0 5 4 0 0 4 0

Musical staff with treble clef, key signature of one sharp (F#), and 12/8 time signature. The melody continues with eighth and quarter notes, ending with a double bar line and repeat sign.

Mandolin

5 4 5 0 5 4 2 2 4 5 0 2 0 5 4 2 0 0 4 0

Musical staff with treble clef, key signature of one sharp (F#), and 12/8 time signature. The melody starts with a repeat sign, followed by eighth and quarter notes.

Mandolin

4 0 5 4 2 5 0 2 0 5 2 2 0 4

Musical staff with treble clef, key signature of one sharp (F#), and 12/8 time signature. The melody continues with eighth and quarter notes, ending with a double bar line and repeat sign.

Mandolin

0 4 0 5 4 2 5 4 2 4 5 0 2 4 5 5 0

Musical staff with treble clef, key signature of one sharp (F#), and 12/8 time signature. The melody starts with a repeat sign, followed by eighth and quarter notes, including a fermata.

Mandolin

5 5 5 5 0 2 5 0 2 2 0 5 4 5 0 4 0

Musical staff with treble clef, key signature of one sharp (F#), and 12/8 time signature. The melody continues with eighth and quarter notes, featuring first and second endings.

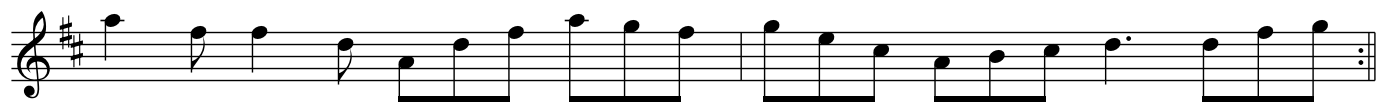
Mandolin

5 5 5 5 0 2 5 0 4 2 4 5 0 2 4 5 5 0 2 4 5 0 2 4 5 5 2 3

Musical staff with treble clef, key signature of one sharp (F#), and 12/8 time signature. The melody continues with eighth and quarter notes, ending with a double bar line and repeat sign.

Mandolin

5 2 2 5 0 5 2 5 3 2 3 0 0 4 2 4 5 0 2 3



Mandolin

5 2 2 5 0 5 2 5 3 2 3 0 4 0 2 4 5 5 2 3